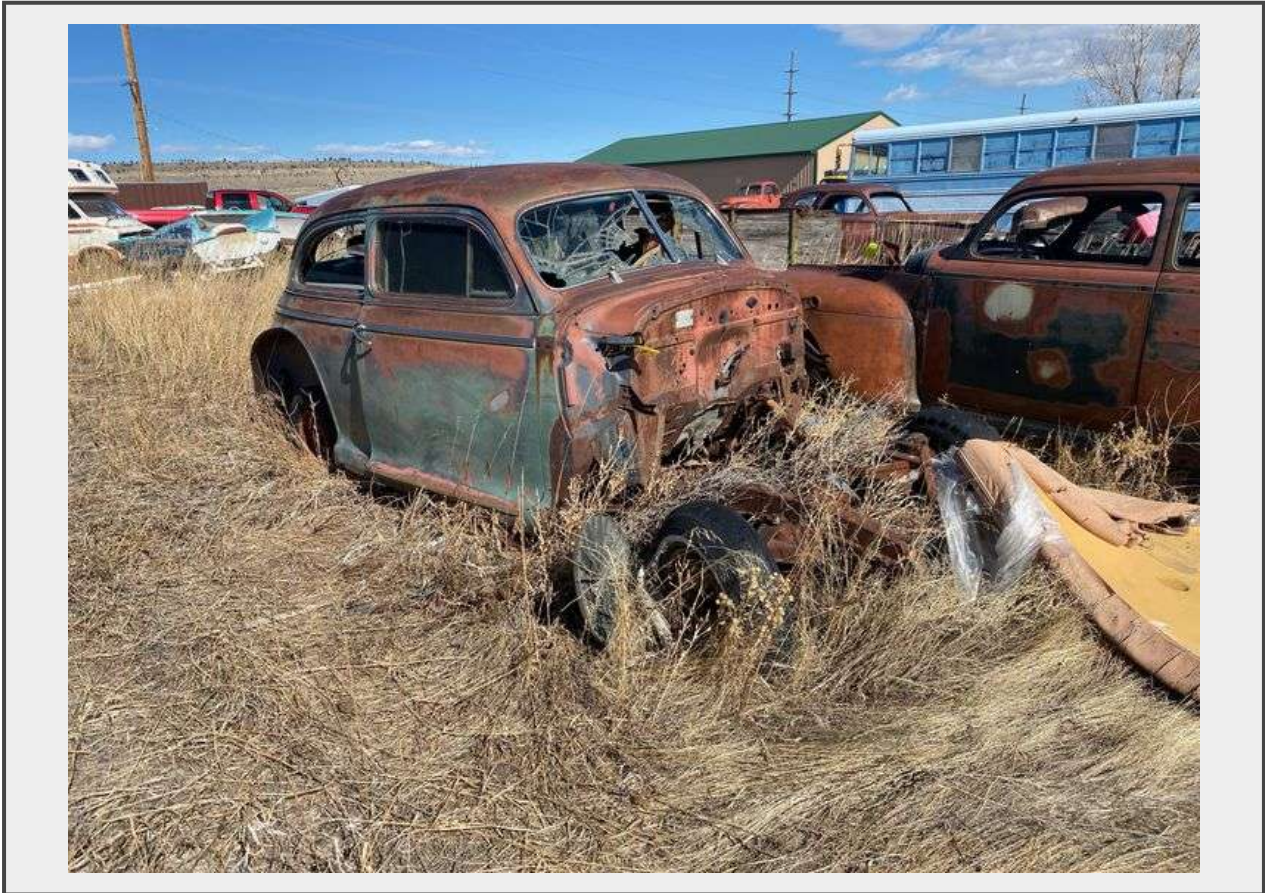


Sale Name: Classic Vehicle Collection Auction American Automotive History a Montana Collection

LOT 10 - 1941 Chevrolet Special Deluxe Two-Door Sedan Project



Description

Steel body with original Fisher Body coachwork as identified by data plate. Features two-door fastback "aerosedan" styling with classic pre-war Chevrolet design elements. Original GM body plate intact with Style No. 41-1011, Body No. 11-1708, Trim No. 116, Paint No. 292.

Condition notes:

Missing engine, transmission, and front/rear fenders. Significant surface rust throughout body panels. Interior completely stripped. All glass damaged or missing. Doors remain attached but show extensive deterioration. Floor pans likely require replacement. Body shell remains largely intact despite extensive corrosion. Refer to the pictures and in-person inspection for condition.

Note: This 1941 Chevrolet represents an increasingly scarce pre-war American automobile project. The 1941 Chevrolet model year is historically significant as it was the final full production year before civilian automobile manufacturing was halted for World War II. While requiring comprehensive restoration or serving as a parts donor, this vehicle provides a documented example of Fisher Body craftsmanship with its original body tag intact. The two-door sedan configuration was a popular body style that offers good potential for restoration or as a foundation for a period-correct custom project.

Quantity: 1



<https://bids.nationalauctionusa.com/>